



Realhemp™ CBD is a high purity powdered cannabidiol compound.

Cannabidiol (CBD) is one of at least 85 active cannabinoids identified in the cannabis plant. CBD is considered to have a wide scope of potential medical applications. Realhemp™ CBD is a high purity powdered form containing at least 97% CBD and no THC (tetrahydrocannabinol).

About CBD

Cannabidiol (CBD) is one of at least 85 active cannabinoids found in the industrial hemp plant (*cannabis sativa*). Hundreds of scientific studies have demonstrated CBD's potential in addressing a wide range of serious conditions, including rheumatoid arthritis, diabetes, chronic pain, schizophrenia, PTSD, epilepsy, Alzheimer's, Parkinson's, HIV dementia and many others. CBD is also non-psychoactive and is not believed to have any addictive properties and has been shown to be extremely well tolerated at high doses with little or no side effects.

Forms & Delivery Methods

- Powderized
- Reconstituted as Oil
- Dietary supplements in the form of Tinctures, Pills, Lozenges, Gum, Gummies, Drinks and many more

Availability

Realhemp™ CBD powder is available in bulk wholesale quantities of 1kg (2.2lb) or more.

Specifications

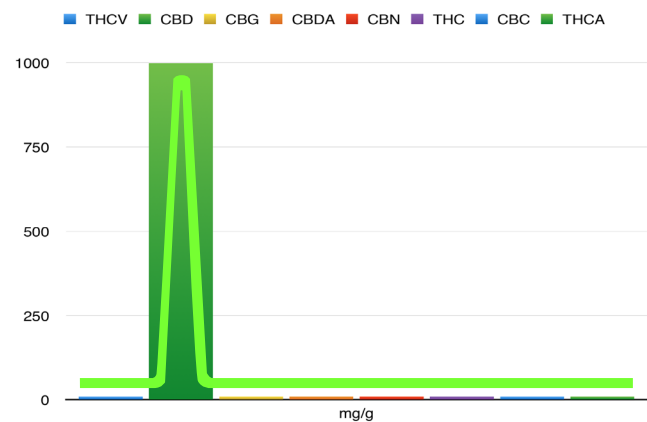
| CANNABINOIDS (HPLC) | | |
|---------------------------------|----------------|---------------|
| | mg/g | % |
| THCV - (Tetrahydrocannabivarin) | <9.50 | <0.95 |
| CBDA - (Cannabidiolic acid) | <9.50 | <0.95 |
| CBG - (Cannabigerol) | <9.50 | <0.95 |
| CBD - (Cannabidiol) | >970 | >97 |
| CBN - (Cannabinol) | <9.50 | <0.95 |
| THC - (Tetrahydrocannabinol) | <3.00 | <0.30 |
| CBC - (Cannabichromene) | <9.50 | <0.95 |

| CANNABINOIDS TOTALS | | |
|---------------------------|-------|-------|
| | mg/g | % |
| Max Active THC | <3.00 | <0.30 |
| Min Active CBD | >970 | >97 |
| Total Active Cannabinoids | >970 | >97 |
| Total Cannabinoids | >970 | >97 |

| TERPENOIDS (GC-MS) | |
|---------------------|-------|
| | % |
| Alpha-Pinene | <0.01 |
| Limonene | <0.01 |
| Terpinolene | <0.01 |
| Linalool | <0.01 |
| Beta-Caryophyllene | <0.01 |
| Alpha-Humulene | <0.01 |
| Caryophyllene Oxide | <0.01 |

| RESIDUAL SOLVENTS (GC-MS) | |
|---------------------------|------|
| | ppm |
| Methane | <6.0 |
| Ethane | <6.0 |
| Propane | <6.0 |
| Isobutane | <6.0 |
| n-Butane | <6.0 |
| Ethanol | <6.0 |
| Acetone | <6.0 |
| Isopropyl Alcohol | <6.0 |
| Isopentane | <6.0 |
| n-Pentane | <6.0 |
| n-Hexanes | <6.0 |

| HEAVY METALS (GC-MS) | |
|----------------------|------|
| | ppm |
| Arsenic | <6.0 |
| Cadmium | <6.0 |
| Mercury | <6.0 |
| Lead | <6.0 |



SYSTEMATIC (IUPAC) NAME

2-[[1R,6R]-6-isopropenyl-3-methylcyclohex-2-en-1-yl]-5-pentylbenzene-1,3-diol

PHARMACOKINETIC DATA

Bioavailability oral: ~13-19%, inhaled: ~11-45% [mean ~31%]
Half-life ~9 h

CHEMICAL DATA

Formula C₂₁H₃₀O₂
Molecular mass 314.4636

PRODUCT IMAGE



For more information or to place an order please call **1-888-781-1235** or reach us via email at info@realhemp.com
Realhemp™ is a registered trademark of **Real Hemp LLC**, a wholly owned subsidiary of **Stevia Corp.** (OTCQB: **STEV**)